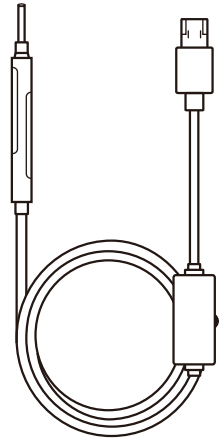


User Manual

USB OTOSCOPE



Description:

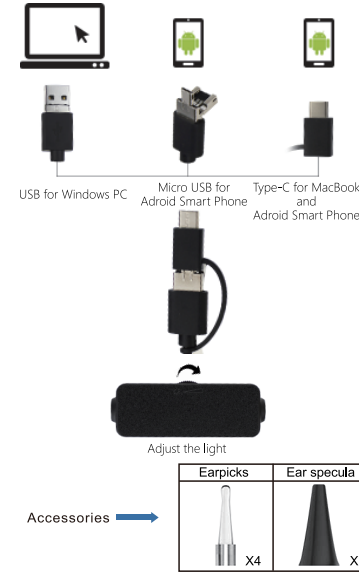
This USB otoscope is a portable handheld video otoscope with a HD Camera. It can easily be operated by plugging directly into your PC, Android smart phone or tablet. The high resolution camera provides good video quality and you can see clearly inside the ear with adjustable LED lights on the top. The camera head and cable are water resistant(IP67)which makes it possible to work in multiple environments. You can also capture pictures or record videos with the manufacturer's software.

Specifications:

- Sensor: 2.0 Megapixels COMS
- Resolution : 1280*720 (3.9mm/4.3mm)
- Light : 6 Adjustable White LEDs
- View angle : 60°
- Focal Distance : 1cm-2cm (0.39in-0.79in)
- Interface : USB2.0 UVC
- Waterproof level: IP67

How to use

How to use the 3 in 1 Adapter:



How to use with the OTG Android Smart Phone:

1. For Samsung series, please try app: OTG endoscope or OTG view
2. For Pixel series, please try app: AN98
3. Other general software for OTG android phone : "Camera fi", Camerafi2", USB endoscope", "real visor endoscope"

How to use with computer:

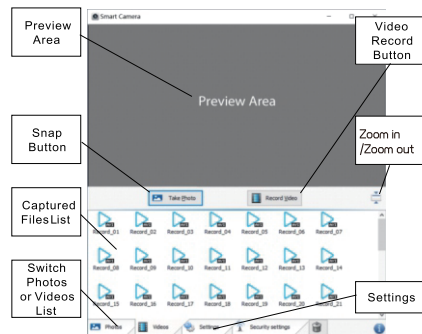
1.How to use the CD inside the Accessories?

Just put the CD in your PC CD-ROM drive, and copy the camera image of CD's software to your PC desk (The software is a bit large, if your C drive memory is small, in order to run smoothly, please put the software to other disks, then copy the camera icon of CD's software to your PC desk), then you can use it directly.

Software Functions

---Windows---

Download and run the software, select Camera in the "Device List" in settings.

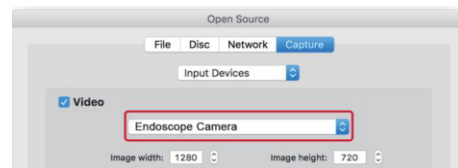
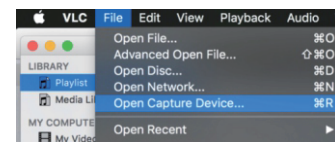


Mac

Download VLC software from
<https://get.videolan.org/vlc/3.0.6/macosx/vlc-3.0.6.dmg>
<https://bit.ly/2Zs4HGR>



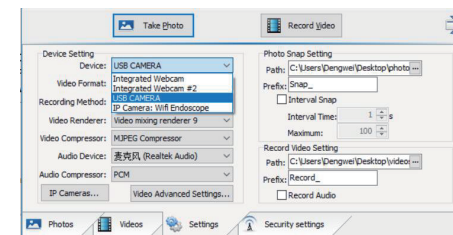
1. Select menu "File"
2. Click on "Open capture device"
3. Select the Camera in the device list.



FAQ

Q: I can use otoscope the first time, but it stops the next time, how to do?

A: 1. Please choose the camera to USB Camera.



2. Please try to change another USB port to connect the otoscope.
3. Please copy the software to your computer and then open the software.
4. Please try to restart the software.

Q: Why the picture or video frozen or lagged?

A: Please adjust the resolution to 1280*720 with 30fps

Q: I cannot see clearly in inside the ear .

A: The best observation range is 0.39inch-0.79inch, please make sure it is in this range, then you will see the clear pictures.

Q: I cannot use it when the otoscope arrive.

1. Please try to change another USB port to connect the otoscope.
2. Please copy the software to your computer and then open the software.
3. Please try to restart the software.
4. Please try to use the software Amcap.

Q: I cannot use it with Android devices.

1. Please make sure your phone has OTG function
2. Please give full authorization to the APP, it will not do harm to your devices.
3. Please try different APPS: USB camera/ Mscope/ OTG view/ Camera FI